

# Adapteo. CAMP

**THE BEST AND  
CHEAPEST  
SOLUTION**

A photograph of a long, two-story modular building with a light-colored facade and several windows. A metal staircase with a railing runs along the side of the building. The ground is covered in gravel. The sky is blue with some clouds.

**Adapteo.**

# How it starts...

Month 1

Month 2

Month 3



Adapteos team is with you from the very beginning to the final result, and ensures timeframes are followed through to project completion.

## Common room

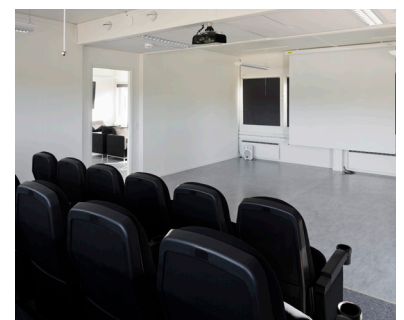
When the working day is over, employees need to be able to retreat and recharge their batteries for the following day. Some go to their rooms, others need to socialize and wind down best when doing something with their colleagues.

Adapteos has experience of providing common rooms with gaming machines, a TV lounge or even a cinema to create unrivalled unity in the team. This unity transfers to work input on-site, to the project's benefit.



## Turnkey contract

Adapteos provided a turnkey contract for Metro Cityringen, where we handled everything from selecting the area to dealing with the authorities and completing the area surrounding the camp. Once the camp is fully assembled it will contain 230 modules.





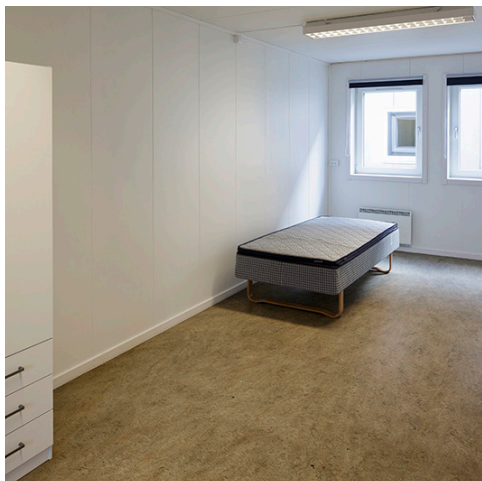
## Professional kitchen

It is important for employees to get a healthy nutritious diet to be as productive as possible. If they have access to a healthy, varied and nutritious diet through the day, their immune system will be strengthened, reducing the risk of sickness and fatigue. Adapteo is focused on creating an environment that provides a healthy, nutritious diet. Should the developer so wish, Adapteo can build a professional kitchen with a canteen, where your own personal chef can prepare nutritious meals using only fresh ingredients.



## Rooms

This is how a room could look, with a lounge area and own toilet/bath. Focus is put on the employee being able to retreat at the end of the working day and recharge for the following day.





**Choose an–  
Adapteo CAMP  
for your next  
project!**

**It is the best  
and cheapest.**

### **Quote from CMT (Copenhagen Metro Team)**

“The benefits of gathering our employees in one camp instead of spreading them across town are enormous. It builds unity and they meet other metro workers from different construction sites in the project,” says Elisabetta Mindopi from CMT (Copenhagen Metro Team).

“One of the biggest advantages of the project is its central location close to Fisketorvet and just 100 metres from the nearest S train station, while also being close to the construction sites. The camp is therefore easy to get to and from.”

“Working with Adapteo has been excellent, and everything has been supplied on time as agreed. They definitely met our expectations,” says Elisabetta Mindopi.

# Adapteo supplies a complete camp

The biggest camp built in Denmark to date lies in central Copenhagen and accommodates the 400 hardy drillers who all work for Metro City-ringen (city circle line) in Copenhagen

Adapteo is the company behind this project. We have extensive experience of building site set-up and management. Adapteo has developed a wide range of services to suit each camp.

It is well documented from previous major construction projects that people work better in proper conditions. A well-run construction site, whether big or small, creates an effective working environment and significantly increases efficiency. The developer also benefits from having more time and energy to focus on the project, operation and quality, so that deadlines are kept and daily fines and building injuries are minimised.

## How a camp is built

The camp is made of modules. The module solution is carefully assembled, taking into account the workforce's needs for good living and leisure facilities while working on a project. Each residential area has a room with ensuite facilities. We recommend 2 types of residential cabin for a camp. Our modules are on stock which means our delivery times are flexible, and a camp is quick to set up depending on size.

In addition to living quarters, we can also build common areas that include a canteen, and leisure facilities. We have positive experiences of setting up a professional kitchen and, as is the case with

the Metro Cityringen camp, of employing a chef to ensure employees have access to good, nutritious food throughout the day. This significantly reduces the risk of sickness and fatigue among employees.

## Leisure facilities

As the employees all live in the same place, it is worthwhile placing leisure activities in the vicinity. This generates a social ambience, employees get to know one another in a different setting, which builds teamwork and creates a home from home.

There are plenty of opportunities to keep employees happy. Adapteo has extensive experience of setting up e.g. a cinema, gym, games room with computers and other gaming machines, a TV lounge, and even an outdoor soccer field.

The possibilities are endless. Examples are: a laundry room, large car park, a waste management system, an on-call service, surveillance, a fence/signage etc. Adapteo can provide all of this, and we are part of the process from start to finish.

## Flexible modules

The module solution can be used for different purposes and can be built in numerous sizes – according to requirements. An on-site camp eliminates the need to spend time on transport to and from work, which optimises production time.

It also reduces the problem of having to make changes to working hours when the unexpected happens, which it often does during construction.



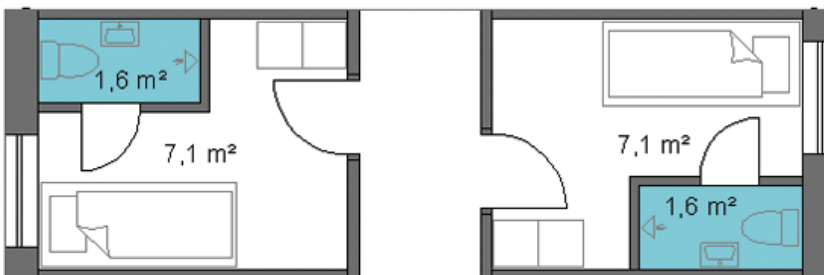
# Module solution

The drawing shows 2 types of residence modules currently used at the Copenhagen Metro City-ringen camp. The modules have been custom-made for this camp. Adapteo can create bespoke residence modules to suit your project.



## Rooms

- One bedroom living quarters with lounge
- Own toilet/bath
- Bed and wardrobe for clothes
- Complies with relevant residence laws



- One bedroom living quarters without lounge
- Own toilet/bath
- Bed and wardrobe for clothes
- Complies with relevant residence laws

## Adapteo – a unique partnership

Adapteo is a leading Northern European provider of modular space solutions. We operate in Sweden, Finland, Norway, Denmark and Germany, with an annual sales net sale of approximately €220 million.

Adapteo is a new brand with 30+ years of experience, born from the acquisition of Nordic Modular Group and the demerger from Cramo. We offer premium modular space solutions, to schools, day-care centers, offices, accommodation and events for temporary and permanent needs.

A changing society needs adaptable space. At Adapteo, we make sure everyone has the right kind of space, so that people can grow, and societies can move ahead. We create flexible modular spaces that are good for the planet and great for the future.

Space to grow.

# Adapteo.

Greve Main 33  
2670 Greve  
Tel. +45 70 90 90 40  
www.adapteo.dk